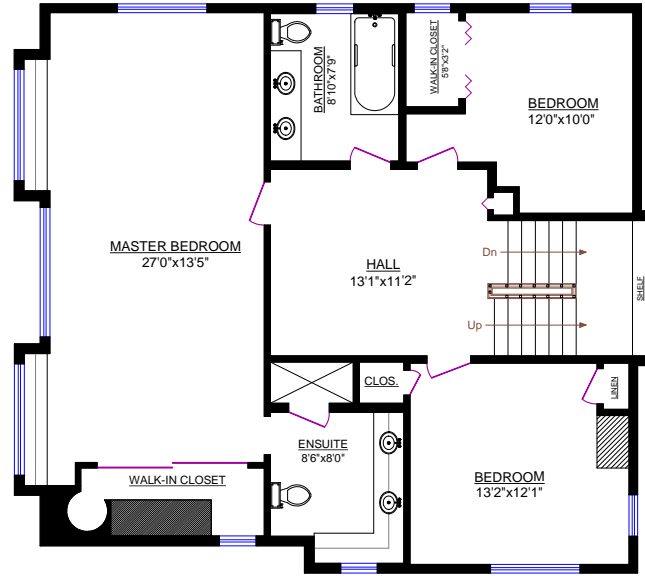


3906 Hastings Street  
 Burnaby B.C. V5C 6C1  
 604.298.1600  
 Toll Free: 877.480.1600  
 www.kenandlinda.com

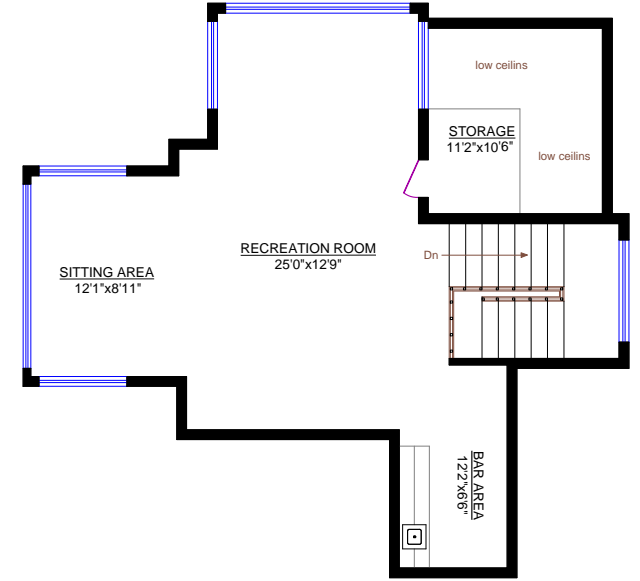
**3789 YALE STREET, BURNABY**

Main Floor: 1,630 sq.ft.  
 Upper Level: 1,238 sq.ft.  
 Top Floor\*\*: 810 sq.ft.  
 Lower Level\*: 1,622 sq.ft.  
 TOTAL: 5,300 sq.ft.

\* Incl. unfin area 174 sq.ft.  
 \*\* Incl. low ceilings area 91 sq.ft.

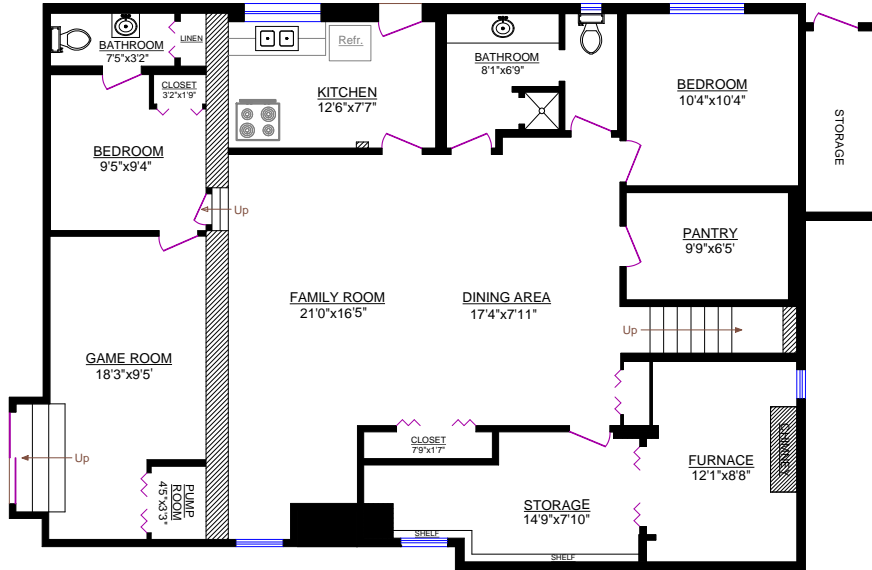


**UPPER LEVEL**

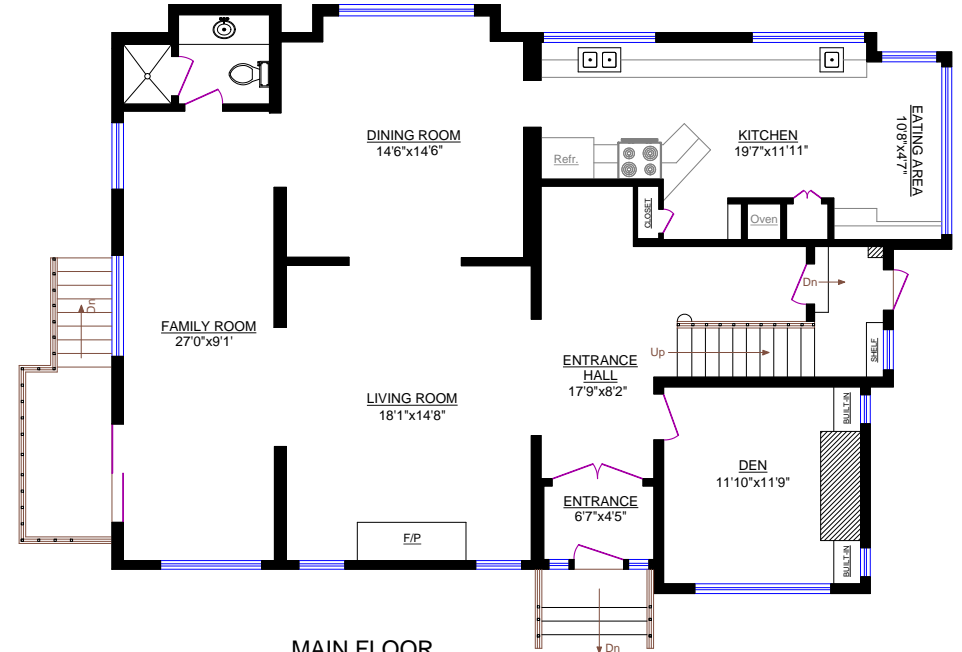


**TOP FLOOR**

Carport: 24'10" x 13'4"  
 Deck: 35'2" x 14'1"



**LOWER LEVEL**



**MAIN FLOOR**

POOL AREA: 55'11" x 40'8"

